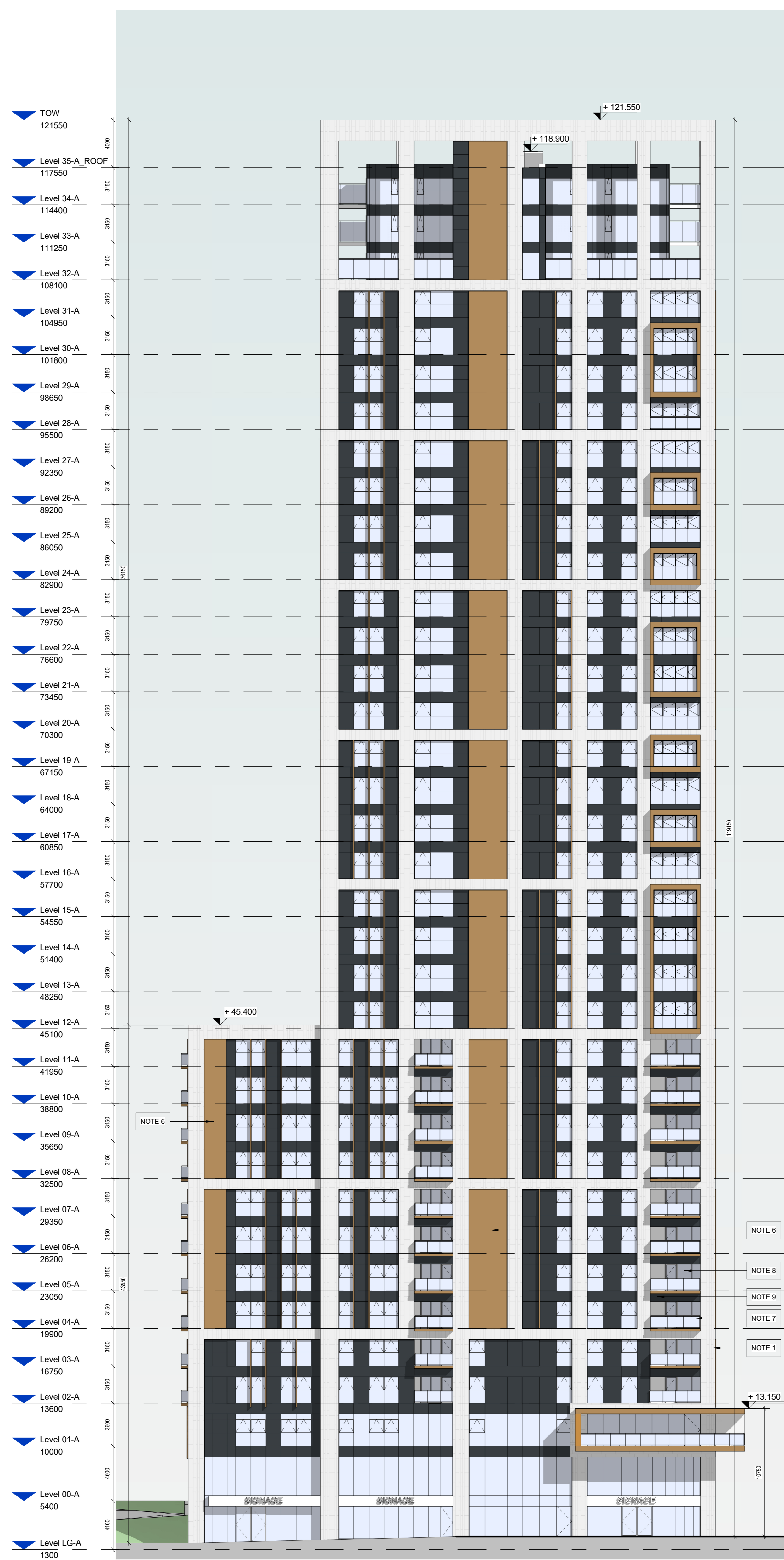
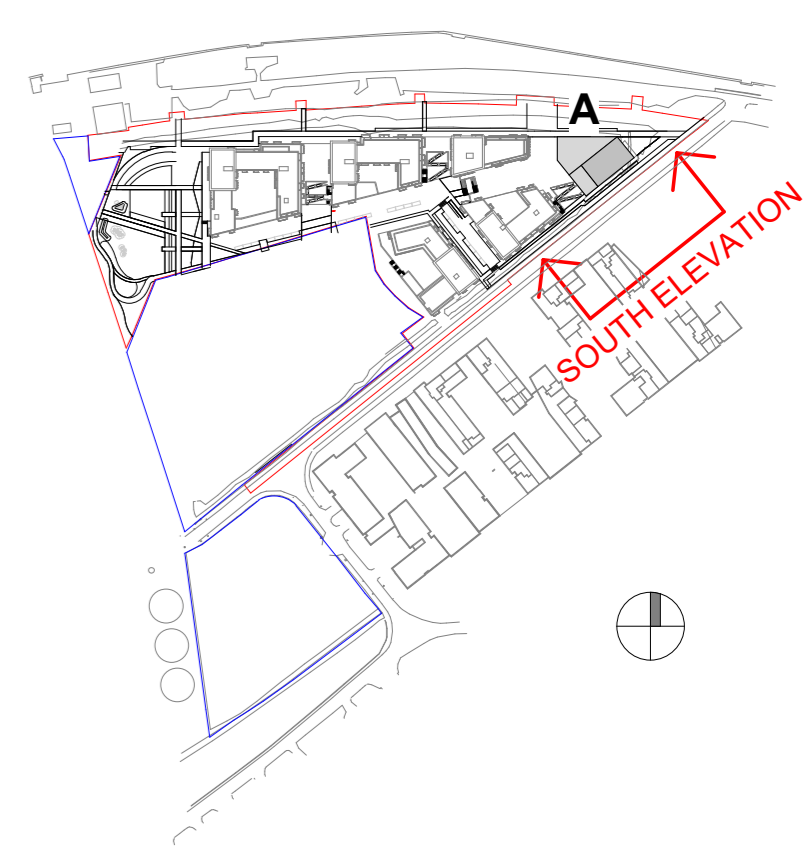


THE COPYRIGHT OF THIS DRAWING IS VESTED WITH CW O'BRIEN ARCHITECTS LIMITED AND MUST NOT BE COPIED OR REPRODUCED WITHOUT THE CONSENT OF THE COMPANY.

FIGURED DIMENSIONS ONLY TO BE TAKEN FROM THIS DRAWING. DO NOT SCALE.

ALL CONTRACTORS MUST VISIT THE SITE AND BE RESPONSIBLE FOR CHECKING ALL SETTING OUT DIMENSIONS AND NOTIFYING THE ARCHITECT OF ANY DISCREPANCIES PRIOR TO ANY MANUFACTURE OR CONSTRUCTION WORK.

NOTES:



- LEGEND**
- NOTE 1:  
PROPOSED FINISH : SELECTED WHITE STONE FINISH.  
REFER TO DESIGN STATEMENT FOR MORE INFORMATION.
  - NOTE 2:  
PROPOSED FINISH : SELECTED BROWN BRICK FINISH.  
REFER TO DESIGN STATEMENT FOR MORE INFORMATION .
  - NOTE 3:  
PROPOSED FINISH : SELECTED DARK GREY BRICK FINISH.  
REFER TO DESIGN STATEMENT FOR MORE INFORMATION.
  - NOTE 4:  
PROPOSED FINISH : SELECTED LIGHT GREY BRICK FINISH.  
REFER TO DESIGN STATEMENT FOR MORE INFORMATION.
  - NOTE 5:  
PROPOSED FINISH : SELECTED WHITE BRICK FINISH.  
REFER TO DESIGN STATEMENT FOR MORE INFORMATION.
  - NOTE 6:  
PROPOSED FINISH : SELECTED METAL FINISH - BRONZE FINISH.  
REFER TO DESIGN STATEMENT FOR MORE INFORMATION.
  - NOTE 7:  
PROPOSED GLASS BALCONY FINISH :  
REFER TO DESIGN STATEMENT FOR MORE INFORMATION.  
INCLUDING BRONZE FINISH TO FACE OF BALCONY DECK.
  - NOTE 8:  
PROPOSED FINISH : CHARCOAL POWER-COATED ALUMINIUM / PVC FRAME WINDOWS / DOORS.
  - NOTE 9:  
PROPOSED DARK SPANDREL PANEL FINISH :  
REFER TO DESIGN STATEMENT FOR MORE INFORMATION.
  - NOTE 10:  
PROPOSED FINISH : SELECTED LIGHT GREY ALUMINIUM VERTICAL FRAME FINISH.  
REFER TO DESIGN STATEMENT FOR MORE INFORMATION.

| Rev | Date       | Description             | Issued By |
|-----|------------|-------------------------|-----------|
| P05 | 28/03/2022 | ISSUED FOR PLANNING     | EB        |
| P04 | 07/03/2022 | ISSUED FOR REVIEW       | EB        |
| P03 | 25/02/2022 | ISSUED FOR PLANNING     | EB        |
| P02 | 08/10/2021 | ISSUED FOR PRE-PLANNING | EB        |
| P01 | 24/09/2021 | ISSUED FOR REVIEW       | EB        |

Project Stage  
**PLANNING**

Client:  
Tiznow Property Company Limited  
(Comer Group Ireland)

Project:  
City Park Development  
at the Former Tedcastles Site,  
Centre Park Road, Cork

Drawing Title:  
**BLOCK A-ELEVATION-SHEET 2 OF 4**

| Drawn | Checked | Paper Size | Scale       | Date     |
|-------|---------|------------|-------------|----------|
| VF    | EB      | A1         | 1 : 200 @A1 | 07/07/21 |

| Project No. | Drawing No. | Classification | Revision |
|-------------|-------------|----------------|----------|
| PE21055     | 2602        |                | P05      |

File Name  
PE21055-CWO-01-ZZ-DR-A-2602

Status:  
**A1 - Authorized and accepted for planning stage**

**C+W O'BRIEN ARCHITECTS**

No.1 Sarsfield Quay, Dublin 7, D07 R9FH  
t: 01 518 0170 e: admin@cwoarchitects.ie  
Dublin | Cork | Galway | London | UK & Europe +  
www.cwoarchitects.ie

*Please consider the environment before printing this sheet*

**1 BLOCK A-SOUTH ELEVATION**  
1 : 200